



型号/TYPE: SLS8810E

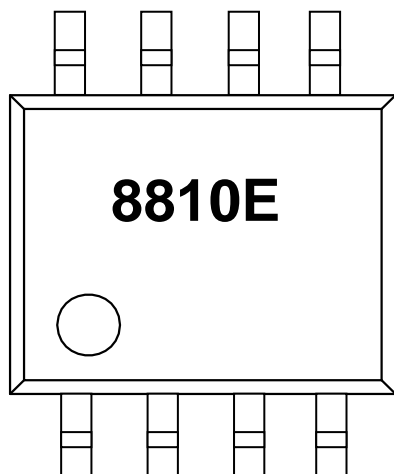
主要特性/Features

N-CHANNEL

应用/Application

暂无

印字/MARKING 引脚定义/pin definition





极限参数/Absolute maximum ratings(Ta=25°C)

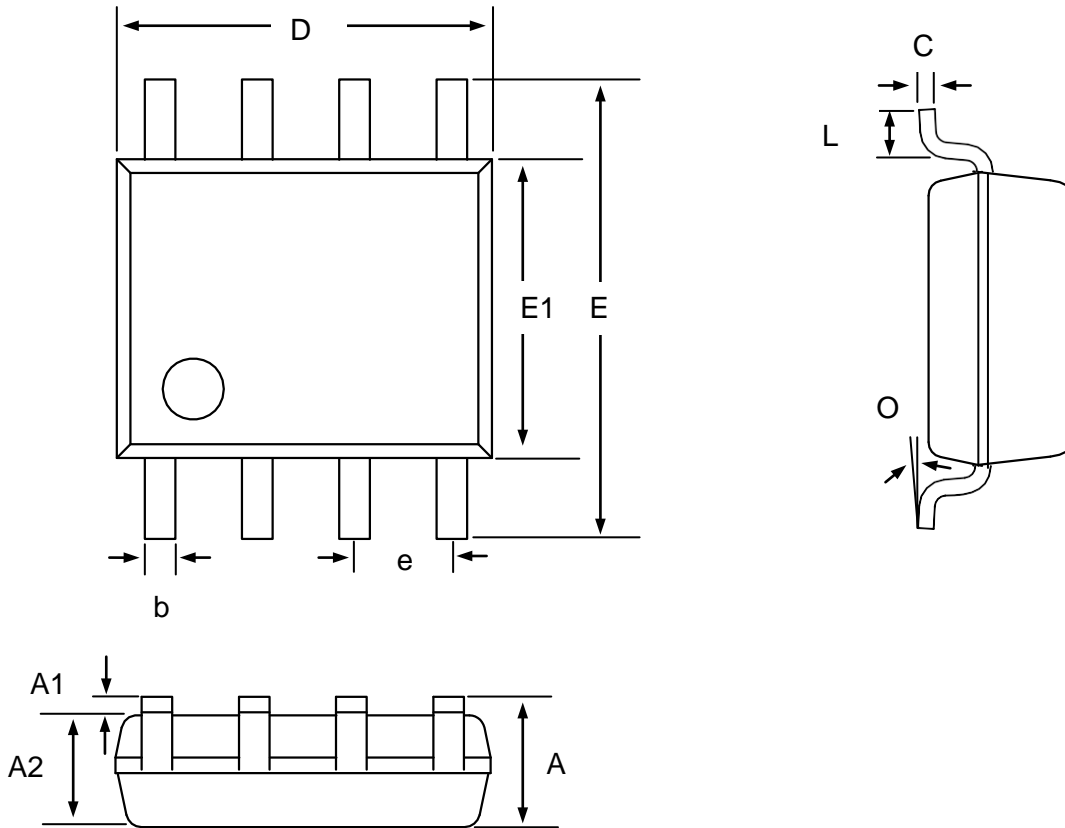
Parameter	Symbol	Ratings	Unit
Drain-Source Voltage	V_{DS}	20	V
Gate-Source Voltage	V_{GS}	± 8	V
Storage and Operating Junction Temperature Range	T_{STG} / T_J	-55 to +150	°C

电性能参数/Electrical Characteristics (TA=25°C unless otherwise noted)

Parameter	Symbol	Conditions	Min.	Typ.	Max.	Unit
Drain-Source Breakdown Voltage	BV_{DSS}	$V_{GS}=0V$ $I_{DS}=250\mu A$	20	-	-	V
Zero Gate Voltage Drain Current	I_{DSS}	$V_{DS}=16V$ $V_{GS}=0V$	-	-	1	μA
Gate-Body Leakage	I_{GSS}	$V_{DS}=0V$ $V_{GS}=\pm 8V$	-	-	± 10	μA
Gate Threshold Voltage	V_{TH}	$V_{DS}=V_{GS}$ $I_{DS}=250\mu A$	0.4	-	1.0	V
Drain-Source On-State Resistance	R_{DS}	$V_{GS}=4.5V$ $I_{DS}=2A$	-	-	17	m Ω
		$V_{GS}=2.5V$ $I_{DS}=2A$	-	-	22	
Drain-Source Diode Forward Voltage	V_{SD}	$V_{GS}=0V$ $I_{SD}=1A$	0.4	-	1.0	V



封装外观尺寸/SOP8 Package Information



Symbol	Dim in mm		
	Min	Nor	Max
A	1.350	1.550	1.750
A1	0.100	0.175	0.250
A2	1.350	1.450	1.550
b	0.330	0.420	0.510
c	0.170	0.210	0.250
D	4.800	4.900	5.000
e	1.270(BSC)		
E	3.800	3.900	4.000
E1	0.400	0.835	1.2700
L	0°	4°	8°